

Moving on:

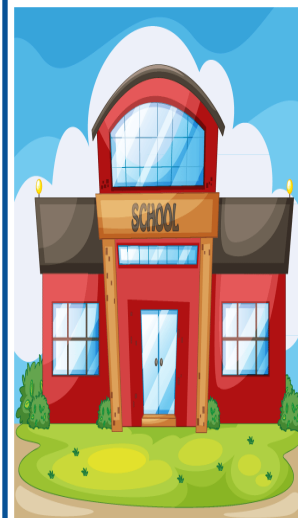
Transitioning from Preschool to School Age when Your Child is *Declassified*



In New York State, a child is eligible to attend kindergarten in September when their fifth birthday is on or before December 1 of that year. When a child receives special education services in preschool, their team of teachers and therapists will either declassify the child at the CPSE (Committee on Preschool Special Education) level or refer the child to the CSE (Committee on Special Education) for the school-age team to determine eligibility. It is the responsibility of the CSE to determine eligibility and, if appropriate, to develop the IEP (Individualized Education Program) for kindergarten. A child who received services in preschool will not necessarily receive services in kindergarten.

What does Declassification mean? At the CPSE Annual Review, your child may demonstrate achievement of their IEP goals or scores in the average range on various assessments. In this instance, they no longer require special education services and will **not** be referred to the CSE for school age services. Or your child may continue to demonstrate some level of need and be referred by the CPSE to the CSE and who may determine your child does not meet the eligibility criteria for school-age services because the needs do not adversely impact your child's educational performance and can be addressed through general education supports.

Many children transition from preschool special education to general education kindergarten classrooms. This is one of the goals of early intervention and preschool special education and is a good thing! Your child has made progress, grown exponentially, and learned many concepts and behaviors necessary for success in kindergarten. However, for many families, the thought of sending their child to elementary school without services can be daunting and nerve wracking. Some families may feel that without the net of special education services, their child will flounder or slip through the cracks. Don't panic! Elementary schools serve all children, have many monitoring capacities, and general education supports.



What General Education supports are available?

- All students are screened prior to entry into kindergarten to determine any need for additional supports
- Examples of supports:
 - Academic Intervention Services (AIS), reading intervention/remedial instruction, behavioral support/social skills programs, consultation from Pupil Personnel team, speech improvement services (SIS)
- Response to Intervention (RtI): Learn more at: <http://www.nysrti.org/>
- Ask your school district for specifics services offered!

Parents are the experts and vital to their child's success!

- * Provide specific information about your child (Use the [All About Me](http://ecdc.syr.edu/resources/all-about-me-todo-sobre-mi/) form <http://ecdc.syr.edu/resources/all-about-me-todo-sobre-mi/>)
- * Maintain consistent communication with your child's teacher(s)
- * Encourage and support your child's efforts
- * Go to curriculum nights, open house, school events and parent/teacher conferences



the Mid-State Early Childhood Direction Center

315-443-4444

<http://ecdc.syr.edu>



315-443-4336

www.supac.org